

Climate Change

Electric trucks – powered by waste



Electric cars being charged with a sign saying, “powered by waste”

Climate Change

Electric trucks – powered by waste



What do you think it means by
“Powered by waste?”

What are the benefits of electric cars
charged by landfill gases?

In nature, nothing is ever really wasted –
how do humans create things that can’t be
reused? How might we change that?

Climate Change

Greenhouse gases



Compost with fruit and vegetable waste

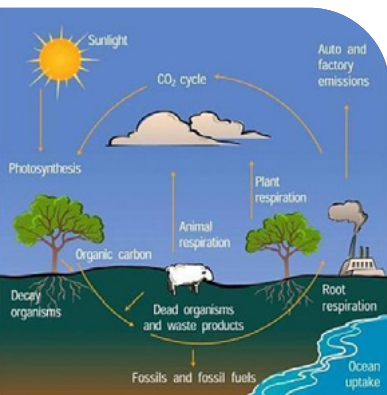


Image of the carbon cycle



Fox Glacier, New Zealand

Climate Change

Greenhouse gases



When organic things (things that were once alive) break down, they release gases. These gases help keep our planet warm, but too much can make it too warm.

How do they use this naturally occurring gas in the landfill?

What might happen if our planet gets too warm?

What are some good ways we could use our organic waste?

Image source:

[SuSanA Secretariat, CC-BY-2.0, via Wikimedia Commons](#)

[Infographic – Carbon Cycle of a Single Tree, Valerie Martin, TERC](#)

[Chalky Lives, CC-BY-SA-2.0, via Wikimedia Commons](#)

Climate Change

Gas wells



A worker at the landfill checking the gas levels



These blue pumps are like a vacuum cleaner that sucks the gas out



The chimney that burns off excess gas

Climate Change

Gas wells



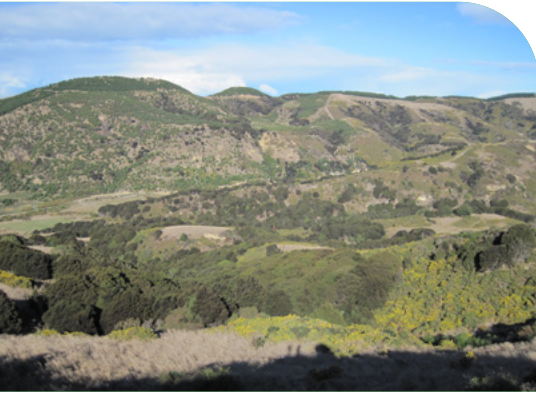
Why is it important to burn off any gas that can't be used?

How do these gases change the environment?

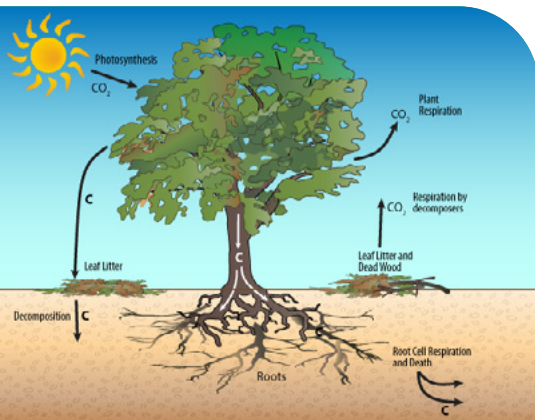
How could we make more use of the gases?

Climate Change

Trees for the climate



Tiromoana Bush



Carbon Cycle of a Single Tree



Tāne Mahuta Kauri tree

Climate Change

Trees for the climate



How do trees consume and produce carbon dioxide?

How might planting more trees reduce climate change?

Would planting more trees be enough to reduce climate change to safe levels?

Image source:

<http://www.learnz.org.nz>

Infographic – The Carbon Cycle, www.windows2universe.org/earth/Water/co2_cycle.html

W. Bulach, CC-BY-SA-4.0, via Wikimedia Commons