

Community Liaison Meeting

6pm, Wednesday 12 December 2012

Site Tour

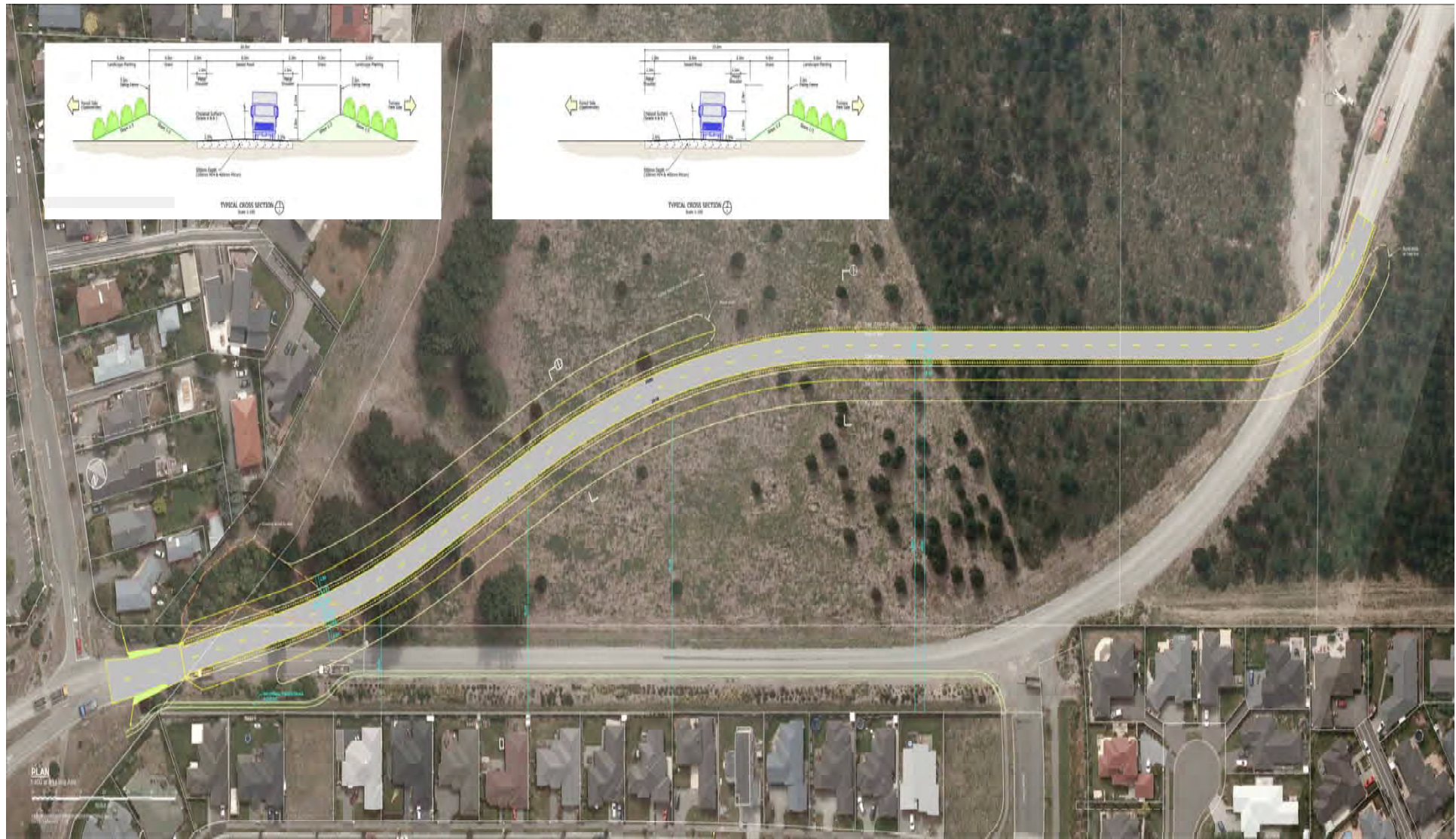
Parklands Baptist Church

Agenda

1. Apologies
2. Draft procedure for meetings
3. Nomination of Chairperson
4. Agenda items that have been forwarded to the Secretary prior to the meeting
5. Road realignment update
6. Truck movements update
7. Reports
 - a. Operational
 - i. Recovery park construction update
 - b. Consent conditions
 - c. Complaints register/responses
8. Website layout
9. General business
10. Date of next meeting (30 January 2013)
11. Close

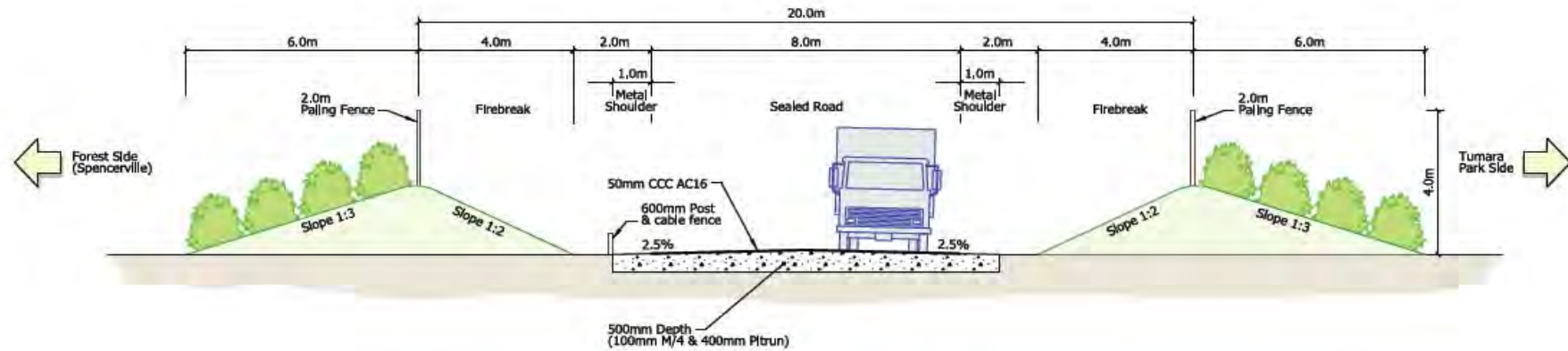
Road Realignment

SLIDE 3

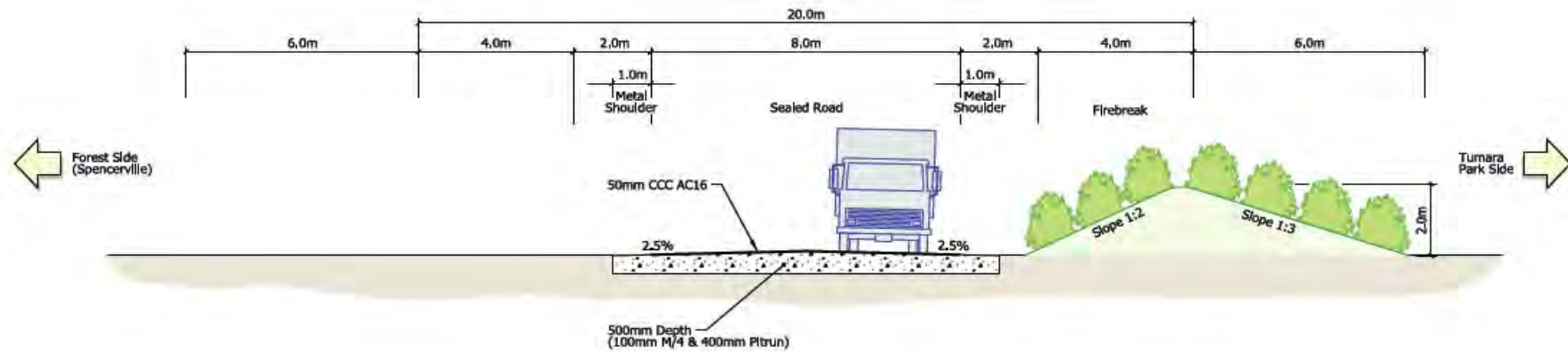


Road Realignment (Cont'd)

SLIDE 4



TYPICAL CROSS SECTION ①
Scale 1:100



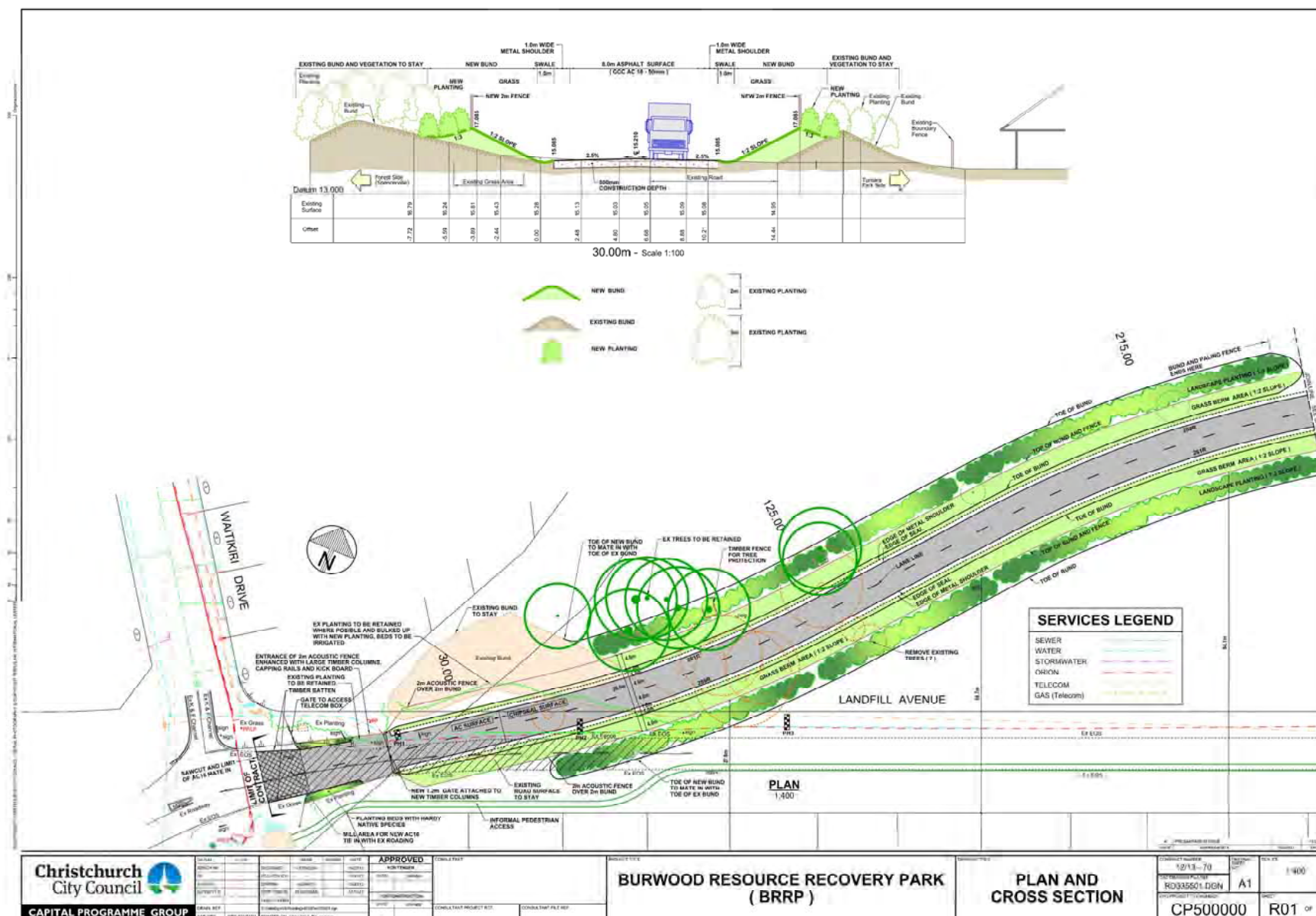
TYPICAL CROSS SECTION ②
Scale 1:100

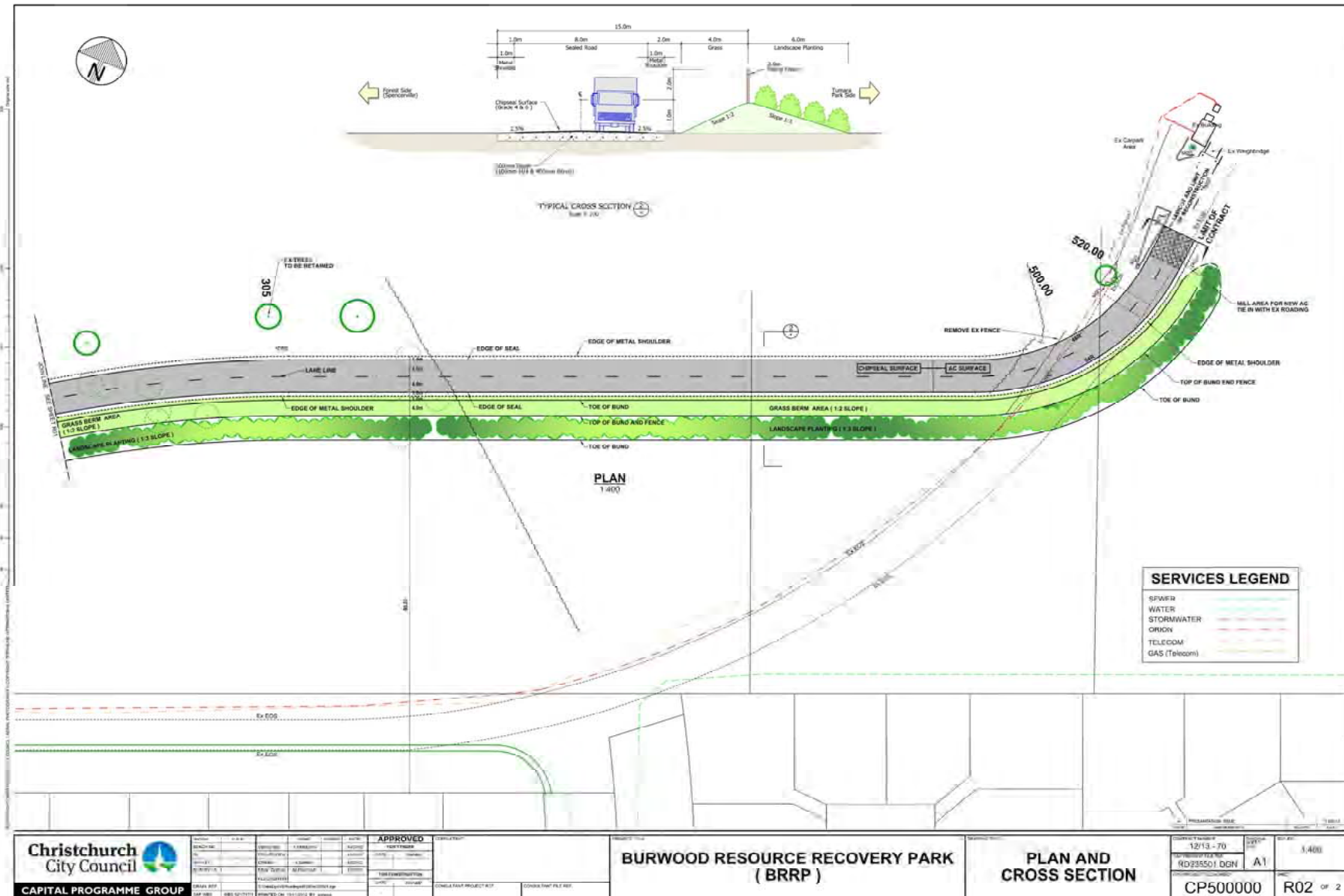
Park Entrance

SLIDE 5



Burwood Landfill & Burwood Resource Recovery Access Road Proposed Fence - Artist's Impression





Demolition and Hardfill

- 3,700 *average* truck movements per month.

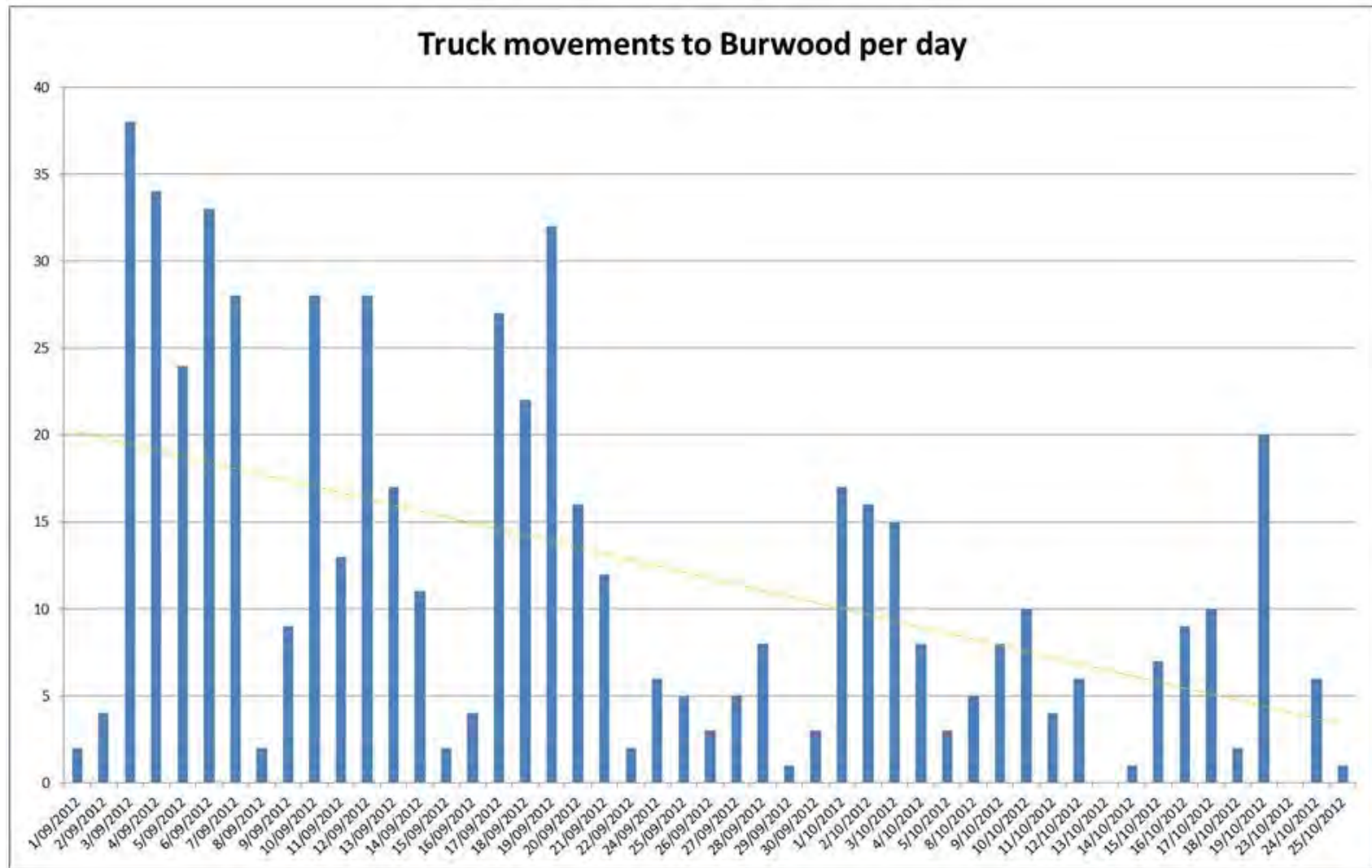
Sucker Truck Numbers

- Reduced from 200 to 120 per day over last few months.

Operations (to be updated)

SLIDE 9

Sucker Truck - SCIRT CCTV 24 hr operation



Processing and recycling plant construction

- Plant construction remains on schedule although weather delays impacted timelines.
- Commissioning, staff training and processing remain on target for January/February 2013.
- 300,000 litre firepond now filled.

Landfill Cell Construction (Site A)

- Preparation work has commenced on levelling the cell.
- Work on groundwater interception system to start soon.
- Ready for use Feb 2013 (in time for the plant commencing operations).

Management Plan

- Management Plan submitted to CCC and ECAN on 14th November 2012.

Traffic Management

- Speed display camera to be installed before Christmas.
- 7 Trucks given first warning for speeding.
- 2 trucks given final warning for speeding.

Noise Management

- Road users being encouraged to maintain vehicles to minimise noise / not to use exhaust brakes (ongoing).

Dust and Odour Management

- Dust monitoring systems installed and occupational monitoring conducted on site at Site B on 20th November 2012 and reported no asbestos fibres.
- Dust levels on the site were within the Workplace Exposure Standards (WES) and insignificant 100m downwind of Site B.

Complaints Register

- No Complaints received.

Road realignment construction timeframe

- December 2012-mid February 2013
 - Earthworks, including bund formation.
- Mid December-mid March 2013
 - Road formation, surfacing and fencing.
- Mid March 2013
 - Grassing, road tie-ins.
- April 2013
 - Autumn planting.

- Hours of operation.
- BRRP- Closed 22 December 2012 to 7 January 2013
 - No roading contractors working.
- From 14 January 2013 - no trucks at night.
- Only demolition trucks Saturday morning.

Christchurch Wastewater Treatment Plant

SLIDE 19



Christchurch Wastewater Treatment Plant

SLIDE 20



Change Give Way to Stop sign at Waitikiri Drive and Burwood/Prestons Roads intersection

- The test is
 - *Reg 5: STOP signs should be erected at blind intersections where lack of visibility makes it unsafe to approach the intersection at a speed greater than 10 km/h.*
- Visibility on the Waitikiri Drive approach to Burwood/Prestons is ample (i.e. +200m in both directions) - criteria is not triggered.
- Give Way is the correct control for this approach to the intersection.
- Engineer suggests truck stopping would create more noise (acceleration, gear changes, air noise) than occurs when a truck rolls through the intersection.

Waitikiri Drive to Burwood Road roading

- Scoping work completed, work scheduled for early February 2013.

Christchurch
City Council