

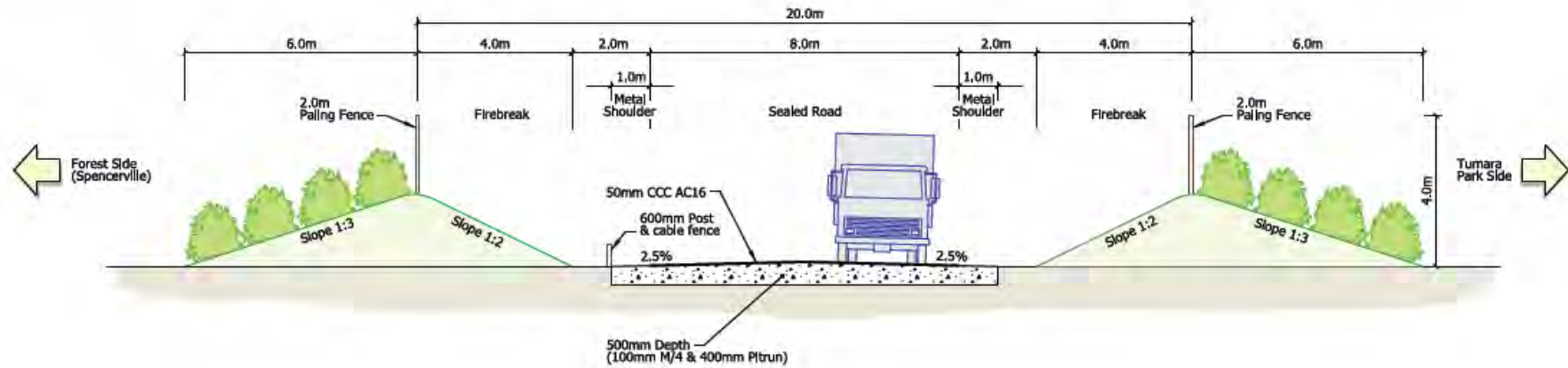
# Community Liaison Group Meeting

6pm, Wednesday 30 January, 2013

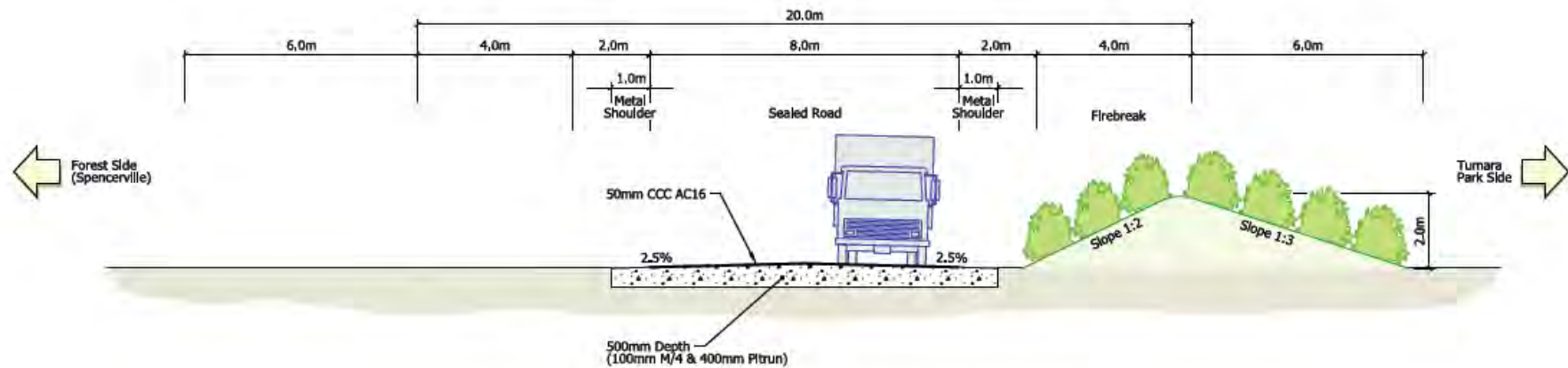
Parklands Baptist Church Community Centre

1. Apologies
2. Agenda items confirmed (including items forwarded to the Secretary prior to the meeting)
  - a. Pool fences Reka Street
3. Road Realignment
4. Truck movements update
5. Reports
  - a. Operational
    - i. Recovery park construction update
  - b. Complaints register/responses
6. BRRP Website Update
7. General Business
8. Date of next meeting
9. Close

# Road Realignment

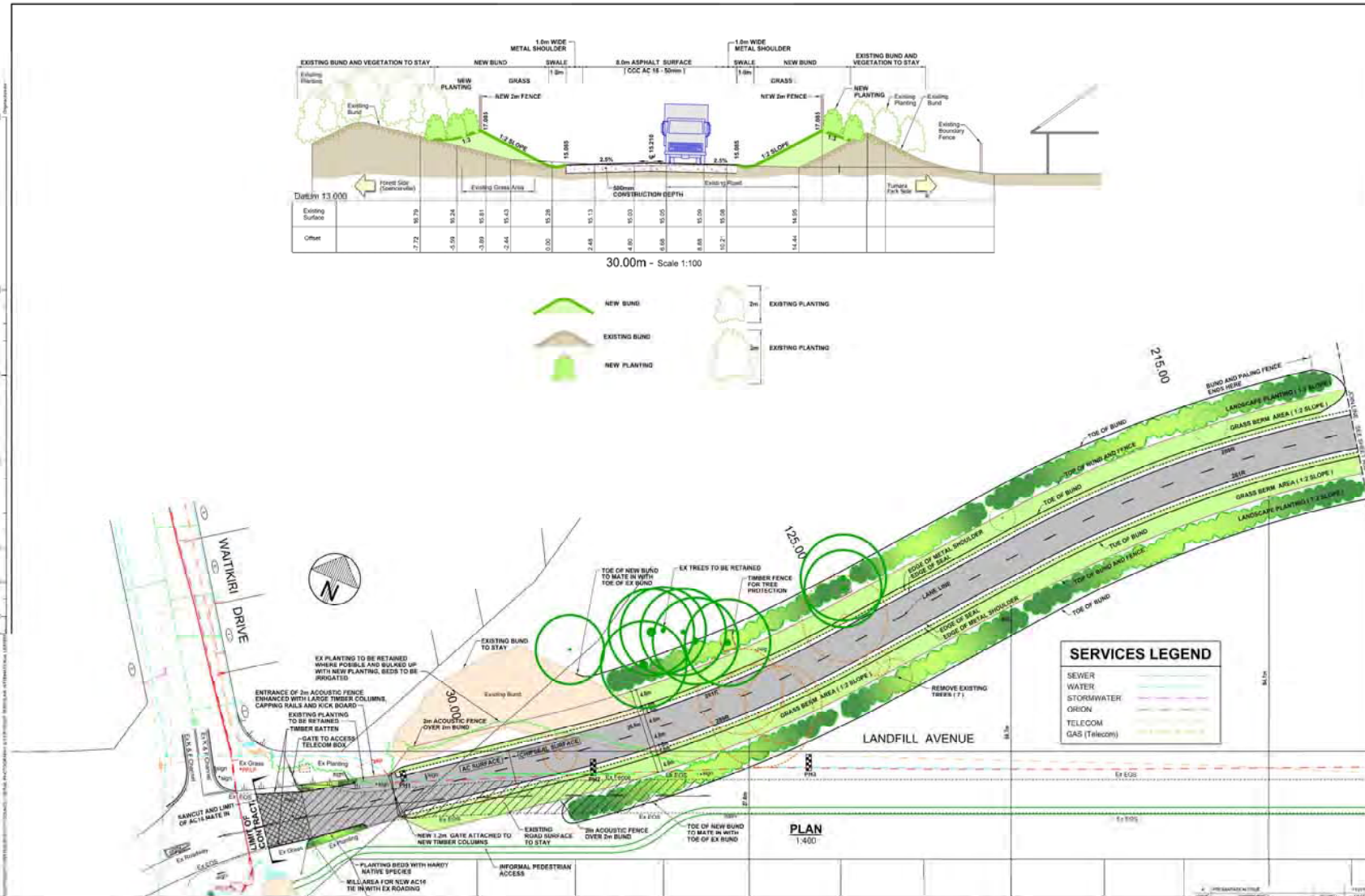


TYPICAL CROSS SECTION ①  
Scale 1:100

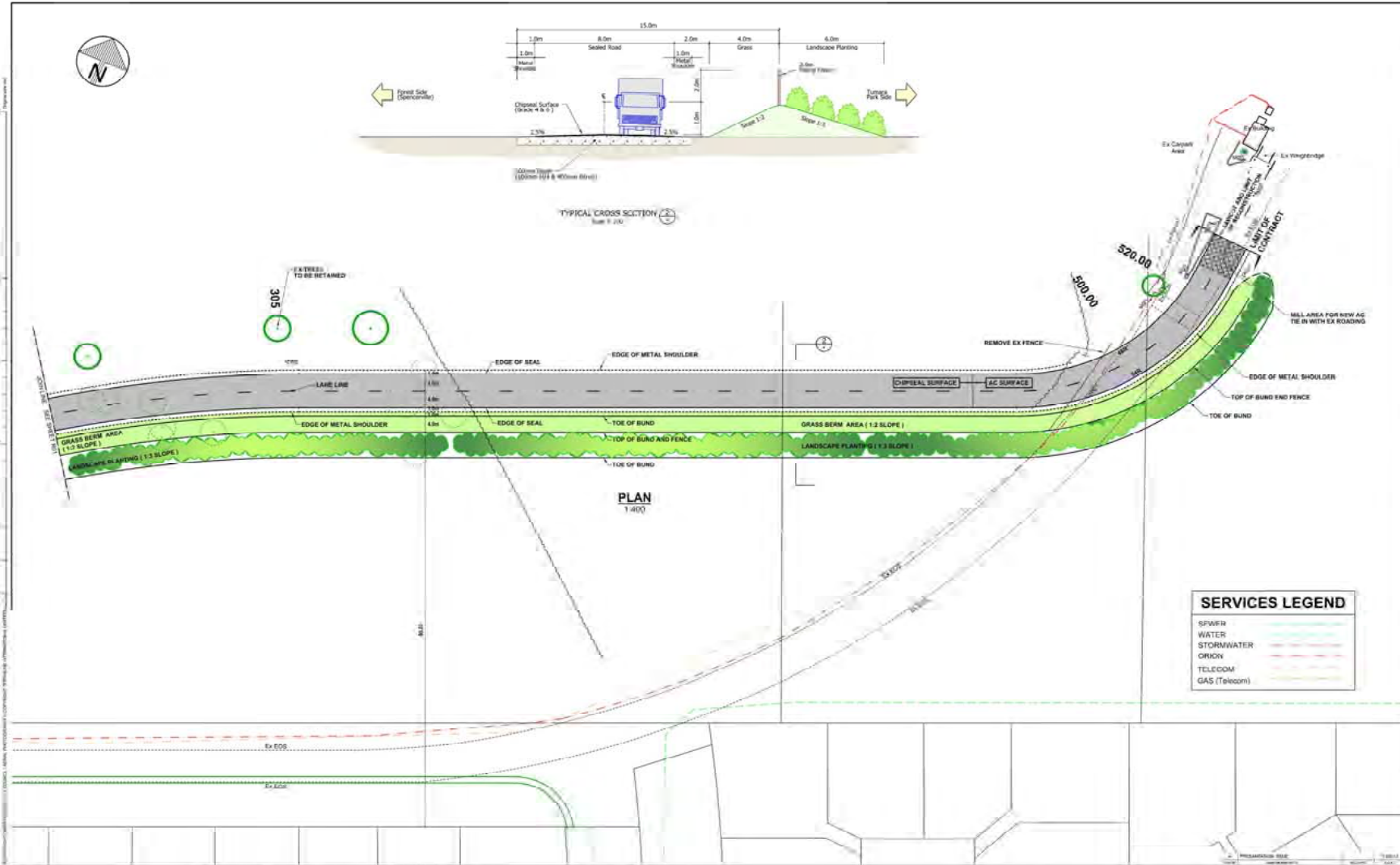


TYPICAL CROSS SECTION ②  
Scale 1:100

# Road Realignment



# Road Realignment





# Road Realignment



# Road Realignment





# Road Realignment







Burwood Landfill & Burwood Resource Recovery Access Road Proposed Fence - Artist's Impression



- Plant closed for holiday period from 21 December 2012 to 7 January 2013
- Demolition and hardfill – anticipate 3,600 average truck movements per month
- Sucker truck numbers reduced from 120 to max.80 per day since reopening with all trucks using Bromley after 5pm weekdays.







## **Processing and recycling plant construction**

- Major components fitted and electrical fitting continuing.
- Conveyors, hoppers and chutes currently being fitted.
- Peripheral items including lighting, dust suppression and covers will be fitted in time for plant operations commencing.



## **Landfill Cell Construction (Site A)**

- Landfill cell floor being levelled.
- Bund being developed next to separate residual waste from stockpiled timber.
- Cell ready to receive material from late Feb 13.

## Management plan

- Submitted December 2012.

## Traffic Management

- 2 trucks given their first warning for speeding.



## Dust and odour Management

- No asbestos reported on Site B.
- Monitor installed on access road, dust levels on the site were within the WES and insignificant 100m downwind of Site B.

## Complaints Register

- 4 Complaints received
  - 5/12/12 - Water cart on Putake Dr,
  - 12/12/12 – general complaint about increase in truck speed,
  - 20/12/12 – Go cart observed on landfill Ave,
  - 12/01/13 – Trucks Speeding on Landfill Ave).
- All issues acknowledged.

## Hours of Operation

- From 14 January 2013 - no trucks at night.
- Only demolition trucks Saturday morning.



## Road realignment construction timeframe

- Roading Contract Awarded – 10 December 2012
- Bulk Earthworks & Bund Formation – mid December to early February 2013
- Road Formation – mid December to late February
- Road Surfacing – end February / early March
- Road Fencing – mid February to early March
- Grassing & Road Cutover – early to mid March
- Road Tie-Ins & Entry Fencing – mid to late March
- Planting – late March to end April 2013

- Pool fences – Reka St

- Next Meeting 6pm, 27 February 2013