

news from Transwaste Canterbury



Kate Valley Landfill Community Trust to benefit whole district

Transwaste Canterbury has announced that, following extensive community consultation, the Kate Valley Landfill Community Trust is about to be formally established.

“We will shortly be advertising for nominations from the community for Trustees to the Community Trust Board,” says Transwaste Chairman Denis O’Rourke. “We would like to get the Trust operating as soon as possible.”

The community area for the Kate Valley Landfill Community Trust is based on the contributing area for the Waipara School. The Deed of Trust, however, allows the Trust the discretion to support projects or facilities in the wider Hurunui district, as long as they also benefit the primary community area. The community area is shown on the map on the next page of this newsletter.

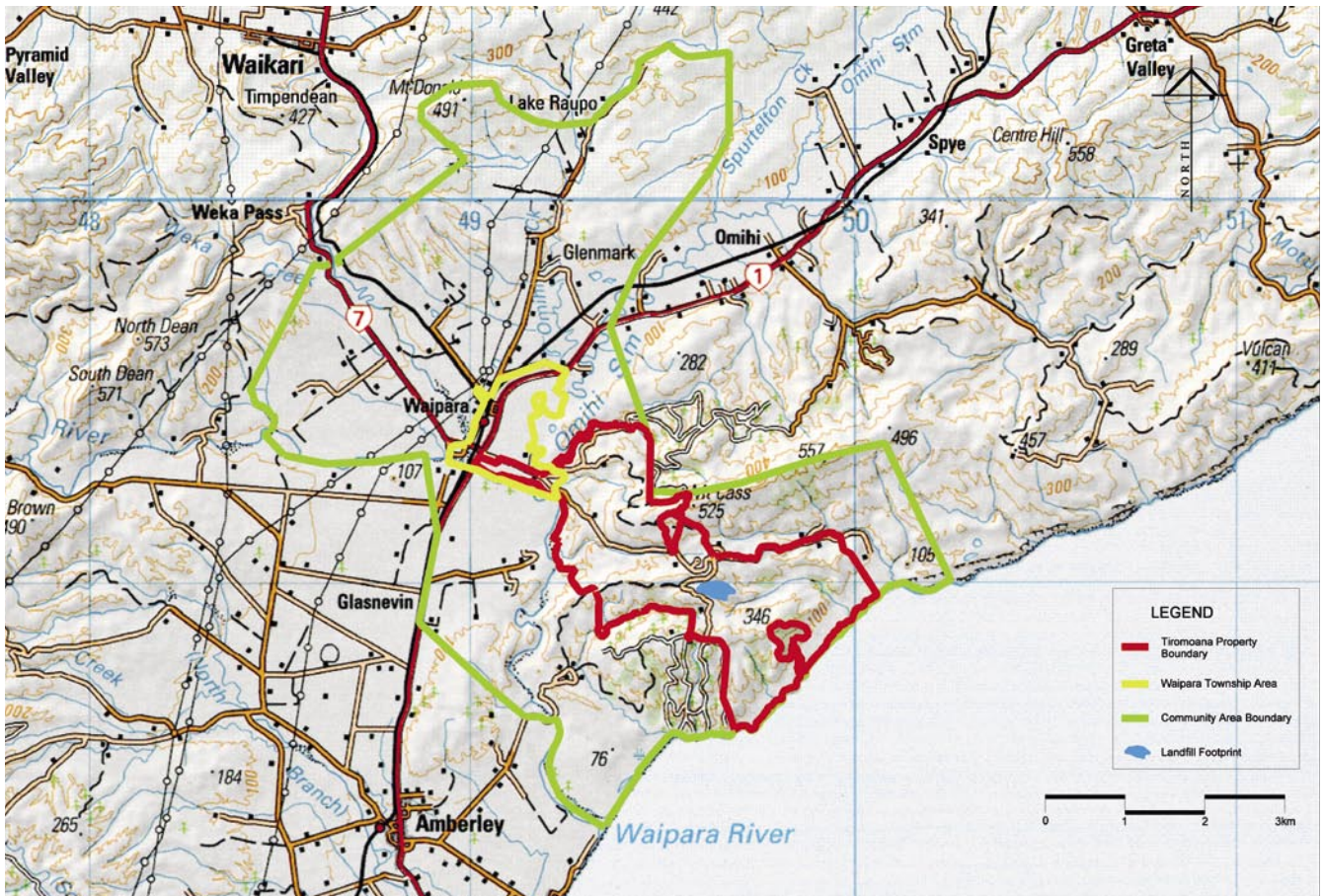
“The Kate Valley Landfill Community Trust is going to be a real benefit for the whole Hurunui District community,” says Denis O’Rourke.

“We have been involved in consultation with local community members and the Hurunui District Council over the Trust, and one of the things we have heard is that the wider district should also be able to benefit.”

A Deed of Trust was drafted in February of this year for consultation purposes. Consultation began with the Mayor and Chief Executive of the Hurunui District Council in March, as well as with other community members and organisations.

Transwaste is setting up the Trust Fund with an initial grant of \$80,000, which will cover its first year of operation. Transwaste will make annual contributions to the Trust Fund, based on the level of use of Kate Valley Landfill by the wider Canterbury community.

“This is a significant amount of new and ongoing community funding, which will add value and strength to the local community. We are looking forward to working in partnership with the Trust and seeing positive community development resulting from its decisions.”



Kate Valley Landfill Community Trust – Community Area

The Kate Valley Landfill Community Trustees will be made up of three people from within the community area and one from the Amberley Ward of Hurunui District, as well as two Transwaste appointees.

“To ensure that the Trust is up and running as soon as possible, Transwaste will appoint the initial Trustees following a transparent, robust nomination process,” says Denis O’Rourke.

An independent expert will run the nomination process, including advertising for nominations, providing information to community members, collecting and vetting the nominations for review by Transwaste, as well as providing secretarial support for the new Trust once it is established.

“This process will ensure that everyone who wants to nominate a community member to be a Trustee will have access to the right information, and that Transwaste has the impartial information it needs to make the initial Trustee appointments.”

“We are looking for people who have a good track record of work and voluntary contribution in the local community, and who are used to working cooperatively with people and making things happen,” says Denis O’Rourke.

The first Trustees will be appointed for an initial period of up to three years. At the end of that period, ongoing community Trustees will be established through a three-yearly community nomination and voting process, with Transwaste again appointing two Trustees directly.

“The Transwaste team is very pleased to be able to move forward in setting up the Kate Valley Landfill Community Trust, following a wide-ranging consultation process over the past few months. We look forward to seeing the new Trust underway, helping to make things happen in the Hurunui,” concludes Denis O’Rourke.

How to contact us:



c/o Canterbury Waste Services
 Freepost 133358, PO Box 13-770
 Armagh Street, Christchurch

Telephone 03 359 1800
 or Tollfree: 0800 872 679
 Fax 03 359 1900
 Email landfill@cws.co.nz