

The background of the entire page is a photograph of an industrial facility. In the foreground, there are large, shiny metal pipes and a cylindrical tank with a pressure gauge. In the middle ground, a worker wearing a yellow hard hat and a high-visibility vest is visible near some equipment. The background shows a building and trees under a clear sky. The overall color palette is dominated by the blue of the sky and the metallic silver of the pipes.

INNOVATENZ

2007 ACENZ AWARDS OF EXCELLENCE

Contents

- 2 Message From The President
- 3 Telecom/ACENZ Future Leader Award
- 4 President's Award
- 5 Community Award

GOLD AWARDS

- 6 Auckland Museum Grand Atrium Project
- 9 Kate Valley Landfill
- 11 New Rewa River Bridge
- 12 Tauhara Geothermal Heat Plant

SILVER AWARDS

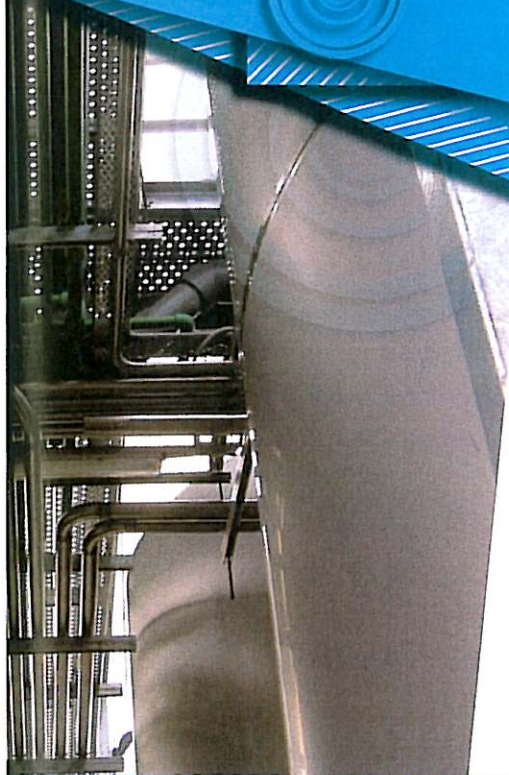
- 13 Aviemore Dam Seismic Safety Evaluation & Upgrade
- 15 Army Bay Sewage Treatment Plant Upgrade
- 16 Lighter Quay Development
- 17 Tane Whakapiripiri- Forensic Maori Mental Health Unit
- 18 Taupo Race Track
- 19 Upper Harbour Bridge Duplication & Causeway Widening

AWARD OF MERIT


- 21 Central Motorway Junction Core Area Upgrading
- 22 Corner 50 Estate
- 26 Environment House (Building Services)
- 27 Mangere Wastewater Treatment Plant Dissolved Oxygen Control
- 29 Mercer To Longswamp Expressway
- 30 Project Black Point, Stage 1
- 31 Te Maunga Wastewater Treatment Plant Bioreactor Upgrade
- 32 Tirau Sewage Treatment Plant Upgrade
- 35 Waitakere Civic Centre (Structural Engineering)

OTHER ENTRIES

- 36 Weavers Pit Rehabilitation
- 38 Auckland Regional Women's Corrections Facility
- 39 Environmental Prediction System
- 40 Fanshawe St And Wellesley St Geometric Improvement & Pavement Rehabilitation Projects
- 41 Hamilton City Council Alliance Partnership
- 42 Hawke's Bay Regional Council Building (Building Services)
- 43 Keith Hay Park Footbridge
- 44 Millerton Track Realignment
- 45 Nelson Wastewater Pipeline
- 46 Ngaio Gorge Road Strengthening
- 47 Nuwara Eliya Remaining Towns Water Supply & Sanitation
- 48 SH1 Plimmerton To Paremata Upgrade
- 49 Sir Neil Waters Theatres Complex
- 50 TravelWise Workplaces Process
- 51 Waikanae Borehole Project



Corner 50 by Connell Wagner



Auckland Museum Grand Atrium by Holmes Consulting Group



Keith Hay Park Overbridge by URCNZ

MESSAGE FROM THE PRESIDENT

Innovation, complexity, and client satisfaction in the outcome, are just some of the criteria used to evaluate the entries in ACENZ's INNOVATE NZ Awards.

This year's entries are representative of the diverse range of professional engineering and related services that ACENZ member firms offer. The traditional civil, structural, and services disciplines are still strongly evident, however many more specialist fields of expertise are now routinely encountered. Many of these have come about through technological and societal changes that have included an increased focus on more energy efficient sustainable solutions.

As technology and society continue to evolve it may be expected that the specific services available through ACENZ members will respond accordingly. However irrespective of the direction this evolution takes, the underlying commitment of ACENZ members to their clients and their projects will remain strong. It is this commitment and drive to deliver better outcomes for their clients that are the hallmark of ACENZ members' "trusted advisor" role in projects.

The projects outlined on the following pages demonstrate this commitment and highlight the value that ACENZ members can add to all aspects of a project.

Thank you to all those who submitted entries and congratulations to those who have received awards. Your achievements are celebrated by your peers.

Andrew Read



President

ABOUT ACENZ

The Association of Consulting Engineers New Zealand is the business association for engineers and related professionals. Established in 1959 as a consulting division of what is now the Institution of Professional Engineers New Zealand, it has been a separate entity since 1970. It serves 176 Corporate Members, which, in turn, employ some 8500 people in a variety of professional and technician roles. These firms range in size from one-person specialist consultants, to multidiscipline firms employing over 1000 people, or more if overseas offices are included.

ACENZ offers many services to members at all levels of their business experience. Newly established firms can take advantage of the experience of others, and more established or large firms find that the group representation of a business association can be invaluable in presenting a united voice.

ACENZ runs a webpage with information on the activities of the association, documents available for engaging a consultant, and a directory of members. This can be found on www.acenz.org.nz The INNOVATE NZ winners are featured on the Awards page.

MSO DESIGN

INNOVATE NZ was designed, produced and published by **MSO Design**.

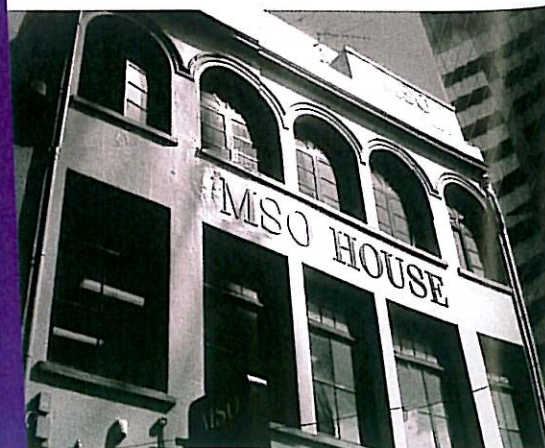
Level 1, 19 Edward St,
Wellington

Phone: 04 384 2677

Fax: 04 385 4778

Email: mark@msodesign.com

www.msodesign.com



COMMUNITY AWARD 2007

A special acknowledgement is made to Solid Energy and Maunsell Ltd for **Weavers Pit Rehabilitation**, which was selected by the judges during the process as showing an exceptional commitment by the community affected by the project, in ensuring it is a success. As is described in more detail on page 36, the community has

welcomed this project to rehabilitate an open cast coal mine at Huntly and contributed by planting and construction of facilities for use in numerous recreational and educational purposes. Solid Energy's initiative in undertaking the project, and Maunsell's assistance in making it happen, have been a great asset to Huntly.

JUDGING THE AWARDS

ACENZ would like to acknowledge the effort and input of the panel of judges who have assessed these projects and recommended the awards. These people are selected for their broad experience in the consulting engineering industry and their specialist knowledge in one discipline. Although some are retired members who offer a service back to the association, others are currently working in the industry in their own practices. They all volunteer their time and expertise. The judges read information presented on each project, interview the client and other members of the project team, and visit the site where possible. For international projects, an ACENZ expert close by may visit the project, or the judges rely on a telephone interview with the client.

Once all projects have been assessed, the judging team meets and weighs up each element of the judging criteria before making a team decision. The projects entered are not compared to choose a "best for 2007" but are judged against the standards of the time. Awards are not made lightly. If there are no projects achieving the ACENZ Gold standard, no award will be made.

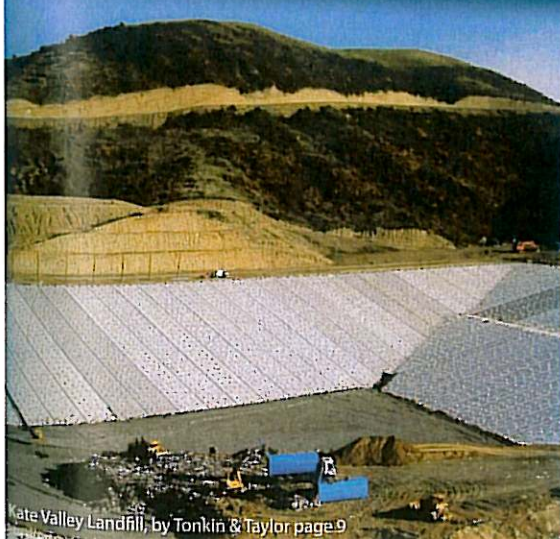
For 2007, ACENZ thanks Convenor of Judges, Adam Thornton for inspiring his team. Others taking part this year were:

David Bridges
George Butcher
Alistair Cattanach
Andrew Charleson
Win Clark

Steve Gentry
Allan Leahy
Alec McCulloch
Bob Nelligan
Peter Riley

Ernst Sansom
Ken Shores
Murray Spicer
Gavin Still

and specialist judges: Gerry Coates, Brett Harries, Ray Hedglund, Steve Reid and David Voss.



Kate Valley Landfill, by Tonkin & Taylor page 9



Environment House, Connell Wagner, page 26

KATE VALLEY LANDFILL

TONKIN & TAYLOR LTD FOR
CANTERBURY WASTE SERVICES LTD

The impressive Kate Valley Landfill project in North Canterbury, is the result of more than ten years of planning and, in the words of the client, "represents one of the finest solutions to a major regional infrastructure problem ever devised in New Zealand."

The landfill provides some 12 million tonnes of waste disposal capacity for the region. The landfill was an essential replacement for the major Christchurch landfill and smaller disposal sites throughout the region. The project was implemented by Canterbury Waste Services for Transwaste Canterbury.

Tonkin & Taylor took the role of principal engineering advisor throughout the project, from site selection, through the resource consent process, to detailed design and construction.

The project received considerable opposition from the community and both the site and the concept design were subject to the closest of scrutiny through the consent process, and the highest standards of design and engineering were required by the Environment Court. Tonkin & Taylor's performance was excellent at all stages.

In landfill engineering terms, the site was challenging and required comprehensive design solutions to address containment, stability, seismic loadings, soil balance and site infrastructure demands.

Key features of the landfill design included a multi-layer soil/geocomposite liner design, complex base grade design, and the detailed geometric design of waste storage and landfill access roads. In addition, two dams (for sediment control and for water supply) were constructed: each involving a significant design challenges.

The advanced containment and site-specific, seismic-responsive design of the liner system, which was required by the Environment Court, puts Kate Valley on a par with the best facilities of its type anywhere in the world. As there were no New Zealand guidelines for the construction of such a liner, Tonkin & Taylor sought an independent international peer review to verify their design.

The project has resulted in region-wide environmental enhancement through the consequent closure of more than 50 old style dumps. The project has also provided some of the most extensive environmental mitigation ever seen in New Zealand, with major local and regional benefit.

The project construction Alliance (composed of the client and three contracting firms) and Tonkin & Taylor, together delivered the finished facility on time, on budget, and to rigid quality specifications. At all stages Tonkin & Taylor kept the client informed and they continue to provide a significant input as the "Trusted Advisor".

The first waste was placed in the facility in June 2005. Overall, the project represents a very low impact solution to an environmental issue which has attracted unprecedented public scrutiny prior to construction. Since construction it has attracted interest of another sort, with regular tours of the plant.

PHOTOS (top to bottom) 1) The completed landfill receives waste transferred from around Canterbury. 2) Laying the geosynthetic lining. 3) Silt control dam, commissioning of spillway.

